

Mitigating Learning Loss Extended School Year Models

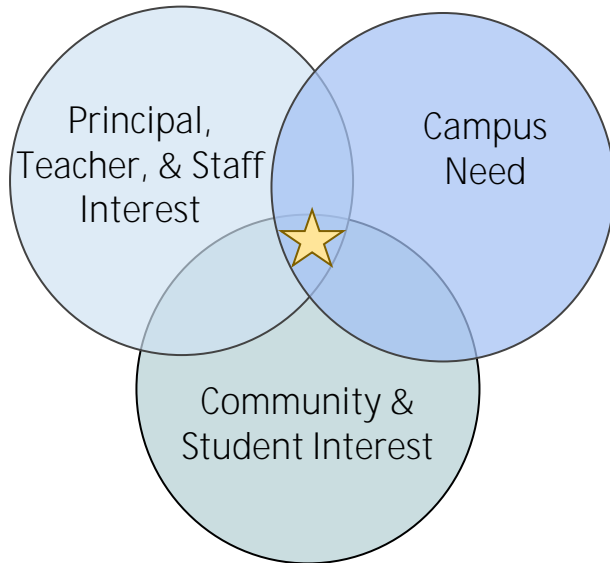
Update on School Selection for
Extended Year Models

SCHOOL SELECTION CRITERIA:



Selection Process

We designed a school selection process to target extended year learning at the intersection of stakeholder interest and student need:



Initial Prioritization of Sites

Based on extensive community engagement and student need, we bucketed feeders into three categories:

High Priority Feeders had initial support for the Intersession calendar from principals and teachers and demonstrated student need.

Remaining Feeders either had enough principal and teacher support for Intersession to be considered but were not as high priority **OR** did not have enough interested schools for feeder-wide adoption of the Intersession calendar.

Our Adjusted Ongoing Process

Schools in **High Priority Feeders** are currently undergoing further **staff and community engagement** before committing to the final school selection.¹

We are also engaging individual schools in our **Remaining Feeders** to identify if there is strong **principal, staff and community interest** in Intersession, with the goal of piloting Intersession programming in at least one campus in all Dallas ISD feeders.

At all schools considering extended year, Principals and EDs will recommend whether or not they want the school to implement an extended year calendar based on continued **staff and community engagement**.

Over the coming weeks, **individual schools** will be able to reflect on additional input from their staff and families to **confirm adopting an extended year calendar**.

UPDATED SCHOOL PARTICIPATION TO DATE - INTERSESSION



High Priority Feeders			
Feeder	Schools Likely to Opt In	Schools Likely to Stay Put	Remaining Schools TBD
	<i>Schools with demonstrated student need that have had additional conversations with staff & community to inform interest in Intersession.</i>	<i>Schools that have had additional conversations with staff & community that reveal either disinterest in Intersession or the inability to fully staff it.</i>	<i>Remaining campuses are still in the process of engaging community and staff to inform whether they will adopt an Intersession calendar.</i>
David W. Carter	4	2	1
Emmett J. Conrad	-	-	5
Franklin D. Roosevelt	3	1	3
H. Grady Spruce	-	1	11
James Madison	1	-	2
Justin F. Kimball	7	-	3
L. G. Pinkston	6	1	1
Lincoln	1	-	2
South Oak Cliff	-	-	9
Thomas Jefferson	-	-	8
Wilmer-Hutchins	-	-	4

Remaining Feeders
<i>Schools are in the process of being identified based on early interest from the school leader, staff & community, and will conduct further staff and</i>

PLEASE SEE APPENDIX B FOR A FULL LIST OF SCHOOLS INDICATING PARTICIPATION OR STAYING PUT ON BASE CALENDAR

Note: 1. School participation data as of Jan 28. 2. The District does have a mechanism by which families wanting Intersession can transfer to an Intersession site, without transportation.

Schools Likely to Opt In

Schools with demonstrated student need that have had additional conversations with staff & community to inform interest School Day Redesign.

Schools that have had additional conversations with staff & community that

APPENDIX TABLE OF CONTENTS

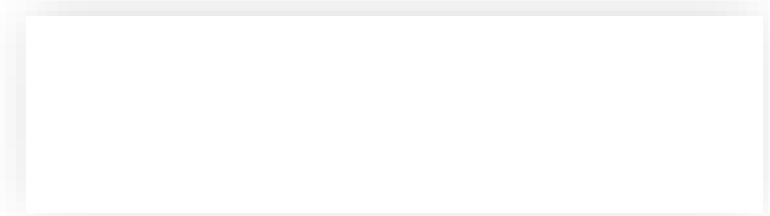


We designed a school selection

APPENDIX B: STATUS TO DATE



Schools with demonstrated student need that have had additional conversations with staff & community to inform interest in Intersession.



APPENDIX B: STATUS TO DATE



Schools Likely to Opt In

Schools with demonstrated student need that have had additional conversations with staff & community to inform interest in Intersession.

Schools Likely to Stay Put

Schools that have had additional conversations with staff & community that reveal either disinterest in Intersession or the inability to fully staff it.

Remaining Schools TBD

Remaining schools are still in the process of collecting community and staff interest to inform whether they will adopt an Intersession calendar.

H. Grady Spruce Feeder

Campus

TBD

Campus

Young Women's STEAM Academy at Balch Springs MS

Campus

B H Macon Elementary School
E B Comstock Middle School
Frederick Douglass Elementary School
Gilbert Cuellar Sr Elementary School
Henry B Gonzalez Personalized Learning Academy
Julius Dorsey Elementary School
Nancy Moseley Elementary School
Richard Lagow Elementary School
Rufus C Burleson Elementary School
W A Blair Elementary School
William M Anderson Elementary School

APPENDIX B: STATUS TO DATE



Schools Likely to Opt In

Schools with demonstrated student need that have had additional conversations with staff & community to inform interest in Intersession.

Schools Likely to Stay Put

Schools that have had additional conversations with staff & community that reveal either disinterest in Intersession or the inability to fully staff it.

Remaining Schools TBD

Remaining schools are still in the process of collecting community and staff interest to inform whether they will adopt an Intersession calendar.

James Madison Feeder

Campus

Oran M Roberts Elementary School

Campus

TBD

Campus

Martin Luther King Jr Learning Center

Paul L Dunbar Learning Center

Justin F. Kimball Feeder

Campus

Hall Personalized Learning Academy at Oak Cliff

Jimmie Tyler Brashear Elementary School

John W Carpenter Elementary School

Leslie A Stemmons Elementary School

Margaret B Henderson Elementary School

Maria Moreno STEAM Academy

Thomas Tolbert Elementary School

Campus

TBD

Campus

L O Donald Elementary School

T W Browne Middle School

Zan Wesley Holmes Jr. Middle School



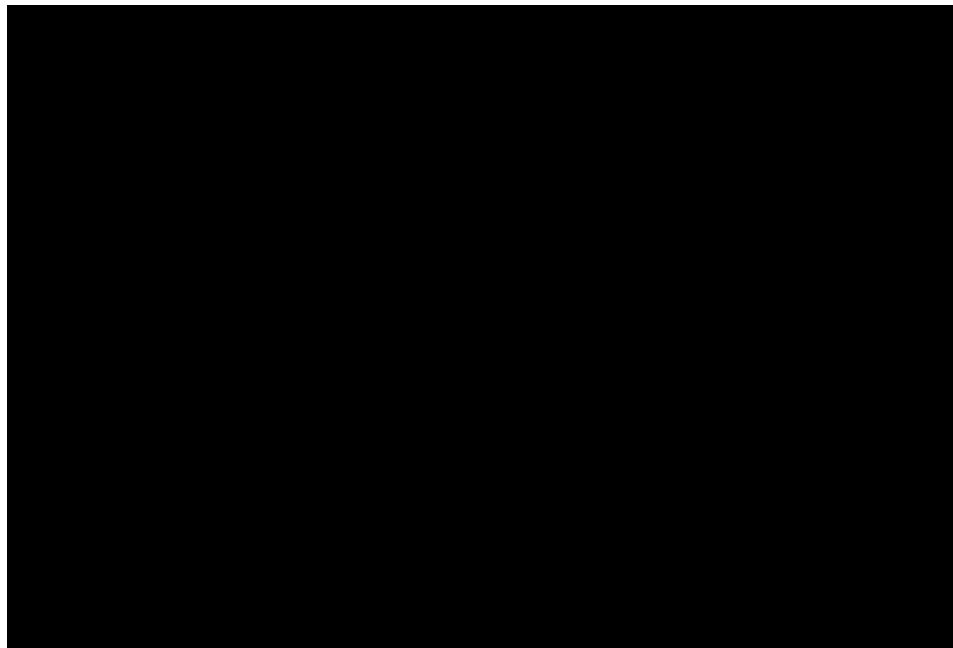
APPENDIX C: STAFF SURVEY DATA FOR LIKELY OPT IN SCHOOL



Example Process: After receiving positive feedback during information sessions with staff and community, the campus leader reviewed survey responses to gauge staff interest. Based on a 70% teacher response rate, the campus leader found...

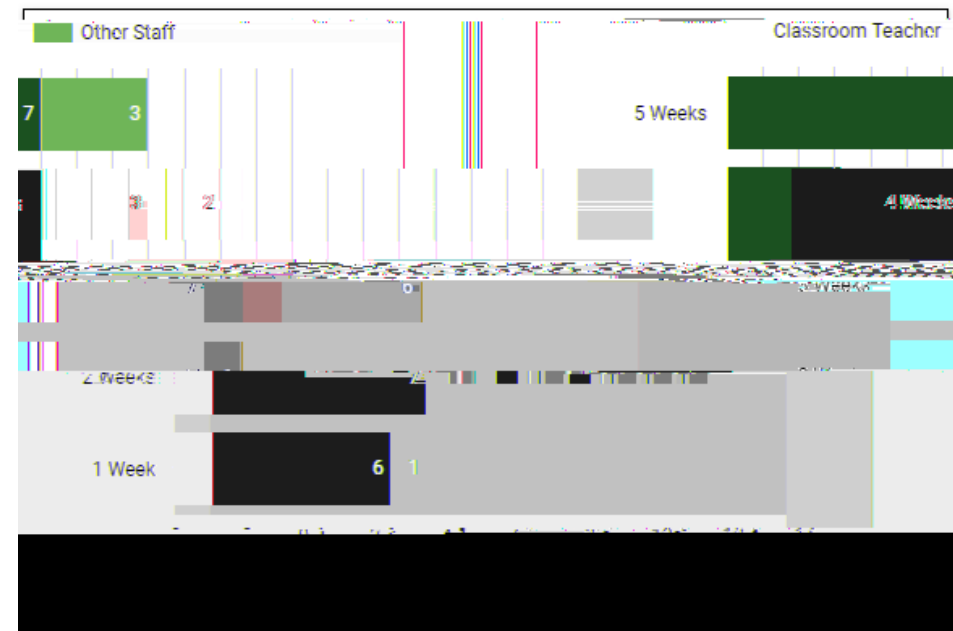
Sufficient Staff Interest in Intersession Calendar

Only 1 staff member raised major concerns about adopting the new calendar



Sufficient Teacher Capacity to Staff Intersession

The majority of teachers expressed interest in working multiple Intersession weeks

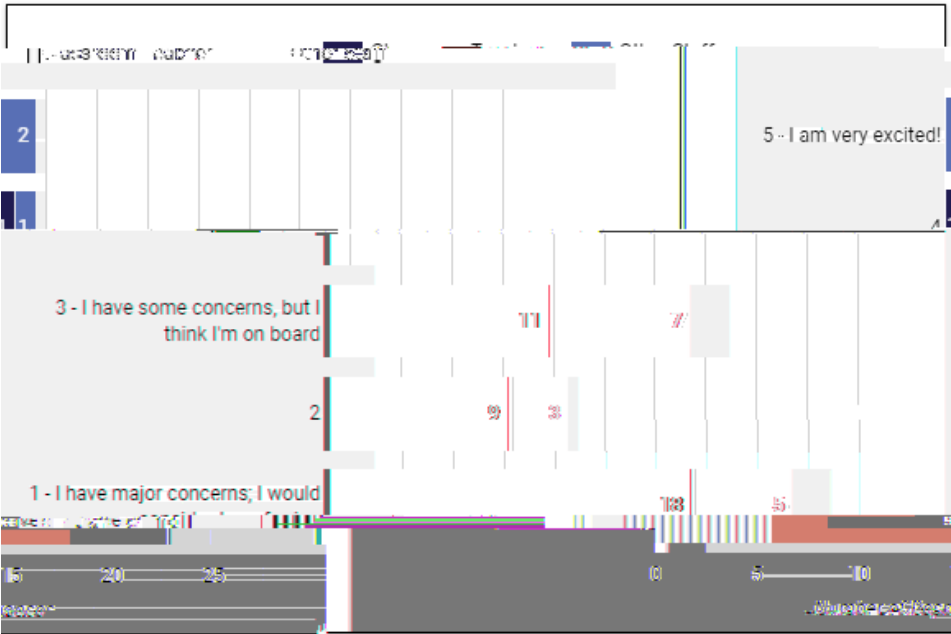


Based on conversations with the school staff and community and the accompanying survey data, the campus leader and ED decided to recommend their participation in Intersession.

Example Process: After receiving concerning feedback during information sessions with community and staff, the campus leader reviewed the survey responses to gauge staff interest. Based on an 83% teacher response rate, the campus leader found...

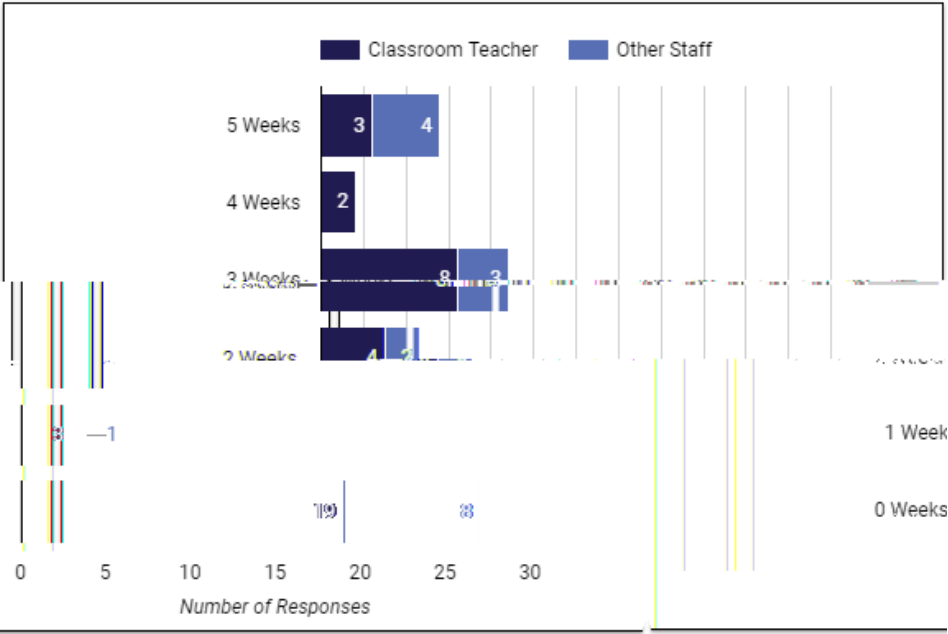
Insufficient Staff Interest in Intersession Calendar

Many teachers & staff raised major concerns about adopting the new calendar



Insufficient Teacher Capacity to Staff Intersession

The majority of teachers expressed no interest in working multiple Intersession weeks



Based on conversations with the school staff and community and the accompanying survey data, the campus leader and ED decided to stay put on the base calendar.